

SW 141 Positioning Switch

Product Description

The SW 141 Positioning Switch is used to deliver any manually selected pressure over a range of 0 to 30 psi (0 to 207 kPa).

Product Number

141-0600

Required Tools

- Adjustable wrench
- 1/4-inch hex key
- Drill for surface mounting
- Flat-blade screwdriver for surface mounting

Expected Installation Time

30 minutes

Prerequisites

- Tube fittings for 1/8-inch NPT internal threads
- 1-7/32 inch (31 mm) diameter hole in panel. For new installations, request cabinet cutout S-3.
- For surface mounting: Mounting Bracket Kit 786-131. Order separately.

Installation

Panel mounting

1. Using an adjustable wrench, attach two 1/8-inch NPT internal thread brass fittings into the supply and return ports (*Figure 1*). The supply port is marked with an arrow → cast into the body.

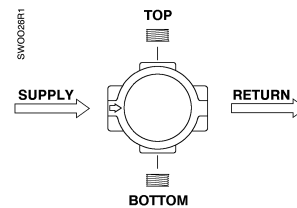


Figure 1. Positioning Switch Ports.

2. Using a 1/4-inch hex key, insert the two provided plugs into the gauge ports on the top and bottom of the switch body.
3. Select the appropriate dial face label and nomenclature label from the sheet provided.
4. Unscrew the body locking ring. Insert the switch body through the panel knockout from the back of panel. See *Figure 2*.
5. Place the dial and nomenclature label face down on the clear plastic bezel.
6. Place the bezel and labels over the switch body on the front of panel.
7. Secure the bezel and switch with the body locking ring.

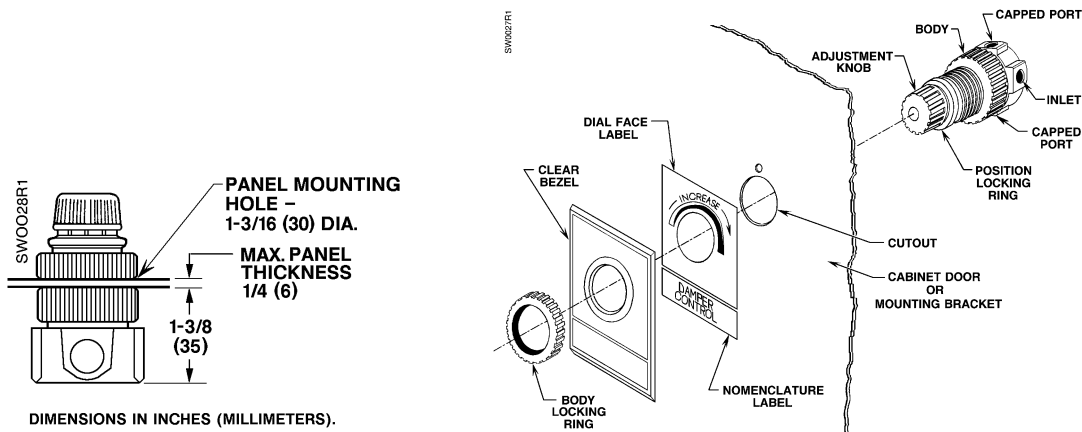


Figure 2. Mounting the SW 141 Positioning Switch.

Installation, Continued

8. Pipe the positioning switch. The supply port is marked with the arrow.

Surface mounting

1. Using the bracket as a template, drill holes for mounting the bracket. See *Figure 3*. Mount the bracket.
2. Using an adjustable wrench, attach two 1/8-inch NPT internal thread brass fittings into the supply and return ports (*Figure 1*). The supply port is marked with an arrow → cast into the body.
3. Using a 1/4-inch hex key, insert the two provided plugs into the gauge ports on the top and bottom of the switch body.
4. Pipe the positioning switch. The supply port is marked with the arrow.
5. Select the appropriate dial label and nomenclature label from the sheet provided.
6. Unscrew the body locking ring. Insert the switch body through the opening from the back of the bracket. See *Figure 2*.
7. Place the dial and nomenclature label face down on the clear plastic bezel.

8. Place the bezel and labels over the switch body on the front of the bracket.
9. Secure the bezel and switch to the bracket with the body locking ring.

The installation is now complete.

Adjustment

1. Pull the red locking ring to allow the knob to turn.
2. Turn the knob to the desired pressure. Clockwise increases the pressure.
3. Push the red locking ring to maintain desired pressure.

References

- SW 141 Positioning Switch
155-117P25
- TB 196 Cabinet Cutouts
155-223P25
- CP 567-7 Pneumatic Control Cabinets
155-272P25
- TB 197 How to Layout a
Pneumatic Cabinet Door
155-224P25

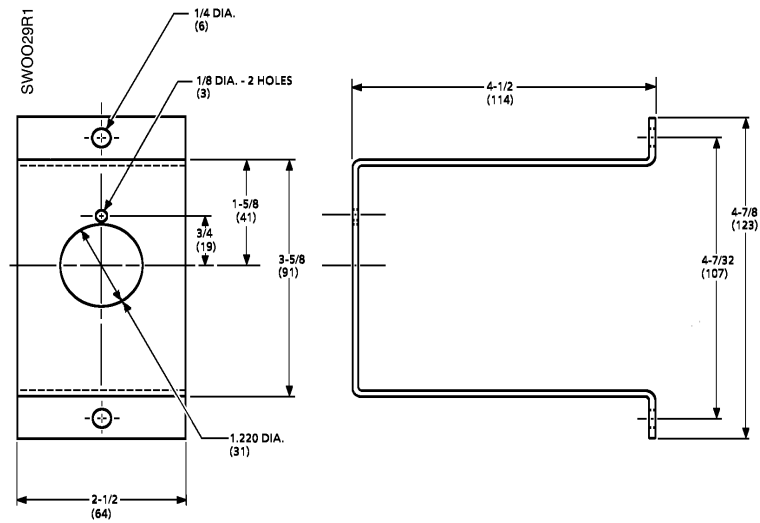


Figure 3. Surface Mounting Bracket.
Dimensions in Inches (Millimeters).

Information in this publication is based on current specifications. The company reserves the right to make changes in specifications and models as design improvements are introduced. © 2000 Siemens Building Technologies, Inc.