

Cast Iron Flange Dimensions For 2-1/2 through 6-inch Valves

Description

This Technical Bulletin shows the standard dimensions for ANSI Class 125 and Class 250 flange valves as defined in ANSI standard B16.1. Also shown are the number and size of bolt holes for each line size. Siemens Building Technologies manufactures its 2-1/2 through 6-inch valves to these standards.

The letters used in the illustrations correspond to dimensions in the accompanying tables. Figure 1 and Table 1 show the ANSI Class 125 flange dimensions. Figure 2 and Table 2 show the ANSI Class 250 flange dimensions.

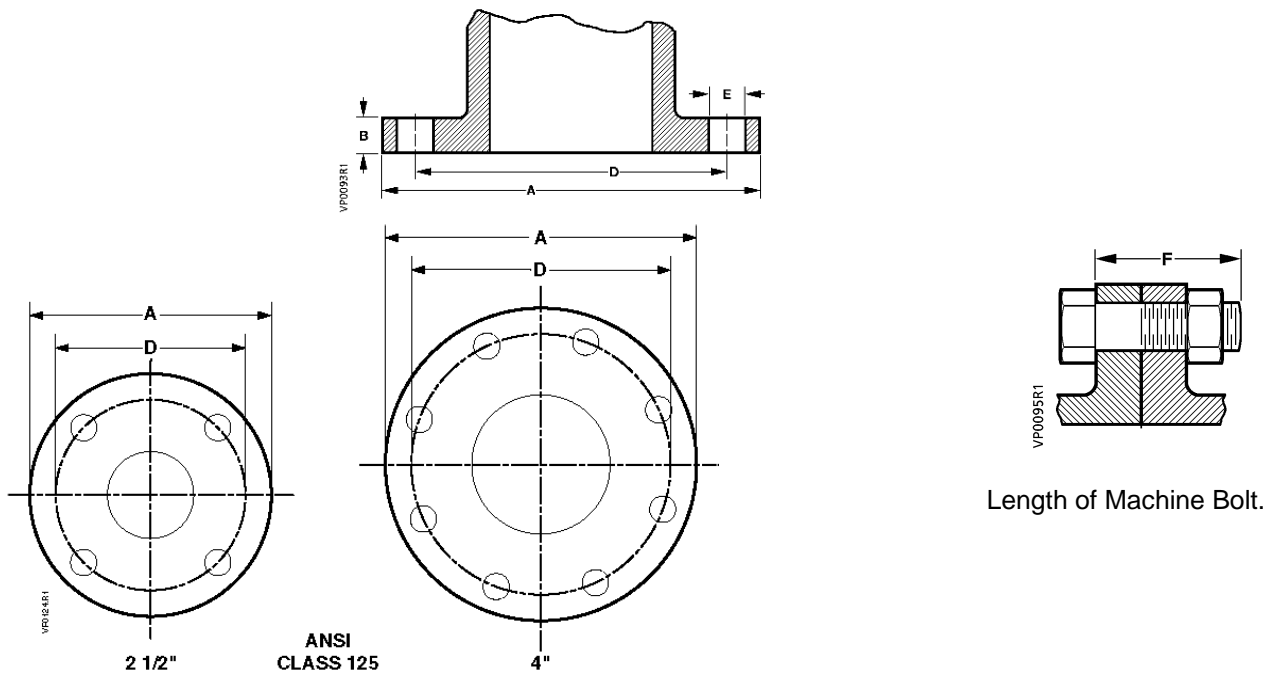


Figure 1. ANSI Class 125 Flange Dimensions.

Table 1. ANSI Class 125 Cast Iron Flanges. Dimensions in Inches.

Nominal Pipe Size	Flanges		Drilling		Bolting		Length of Machine Bolts F
	Flange Diameter A	Flange Thickness B	Diameter of Bolt Circle D	Diameter of Bolt Holes E	Number of Bolts	Diameter of Bolts	
2-1/2	7	11/16	5-1/2	3/4	4	5/8	2-1/2
3	7-1/12	3/4	6	3/4	4	5/8	2-1/2
4	9	15/16	7-1/2	3/4	8	5/8	3
5	10	15/16	8-1/2	7/8	8	3/4	3
6	11	1	9-1/2	7/8	8	3/4	3-1/4

Dimensions

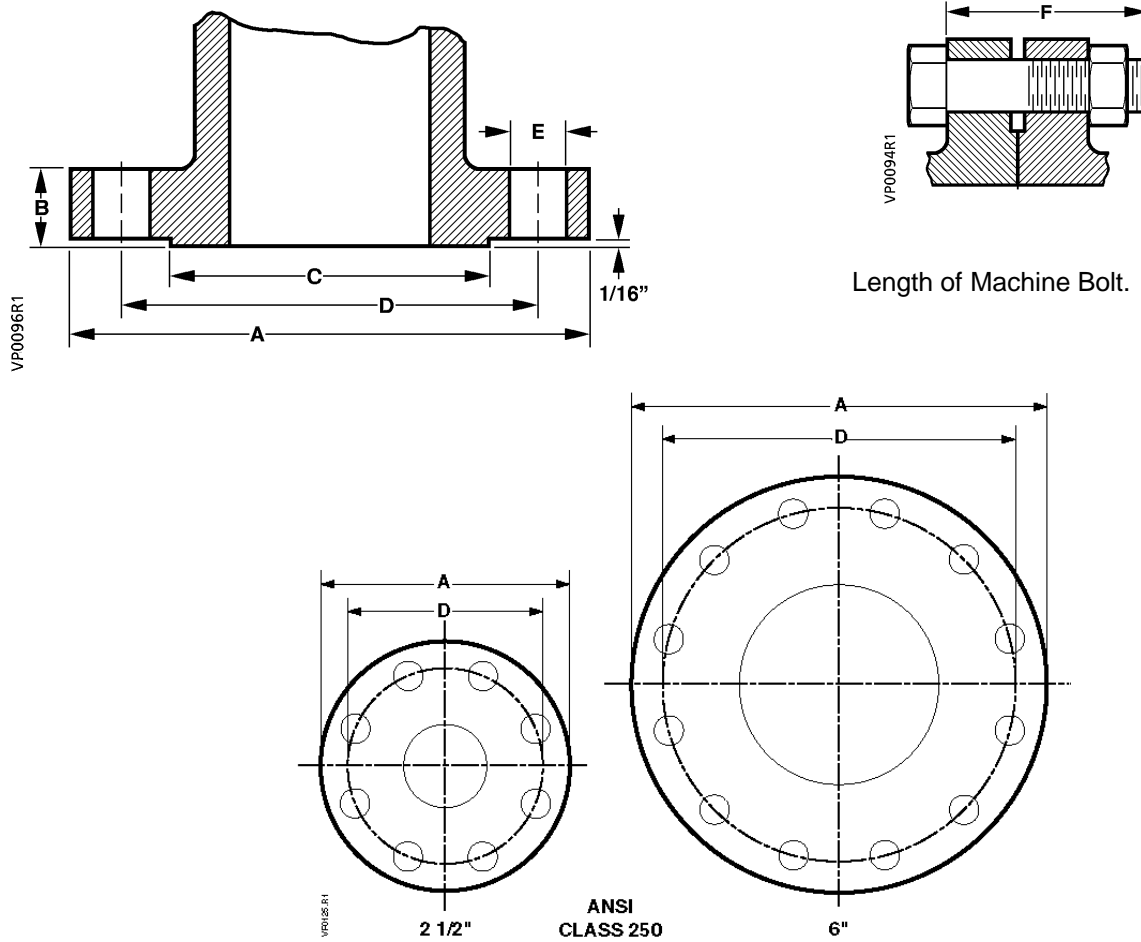


Figure 2. ANSI Class 250 Flange Dimensions.

Table 2. ANSI Class 250 Cast Iron Flanges. Dimensions in Inches.

Nominal Pipe Size	Flanges			Drilling		Bolting		Length of Machine Bolts F
	Flange Diameter A	Flange Thickness B	Diameter of Raised Face C	Diameter of Bolt Circle D	Diameter of Bolt Holes E	Number of Bolts	Diameter of Bolts	
2-1/2	7-1/2	1	4-15/16	5-7/8	7/8	8	3/4	3-1/4
3	8-1/4	1-1/8	5-11/16	6-5/8	7/8	8	3/4	3-1/2
4	10	1-1/4	6-15/16	7-7/8	7/8	8	3/4	3-3/4
5	11	1-3/8	8-5/16	9-1/4	7/8	8	3/4	4
6	12-1/2	1-7/16	9-11/16	10-5/8	7/8	12	3/4	4

Information in this publication is based on current specifications. The company reserves the right to make changes in specifications and models as design improvements are introduced. Product or company names mentioned herein may be the trademarks of their respective owners.
 © 2005 Siemens Industry, Inc.