

RV 201 Pressure Reducing Valve

Product Description

The RV 201 Pressure Reducing Valve (PRV) is a diaphragm operated regulator designed for precision control of air supply pressure to pneumatically operated equipment.

Product Number

201-1000 (with mounting bracket).

Expected Installation Time

35 minutes

Required Tools

Medium flat-blade screwdriver

Prerequisites

- Install shut-off valve ahead of all equipment.
- Always blow out line to remove scale or other foreign matter.
- Install a filter directly ahead of PRV.

Mounting Instructions

- Install PRV as near as possible to the point of use or to the equipment it is supplying.
- Attach mounting bracket to mounting surface with two screws (not provided).
- Remove three flange screws.
- Use screws provided with mounting bracket, to attach PRV to mounting bracket (Figure 1).

Instructions

- The piping connections are marked in each port on the underside of the PRV body.
- Install the PRV in the line so that air flow is from **IN** to **OUT**.
- Tappings **L** and **R** are normally used for gauges, but may be also used for outlet or service purposes in certain applications.
- Apply pipe compound to external threads only. Use only enough compound to make tight joints.

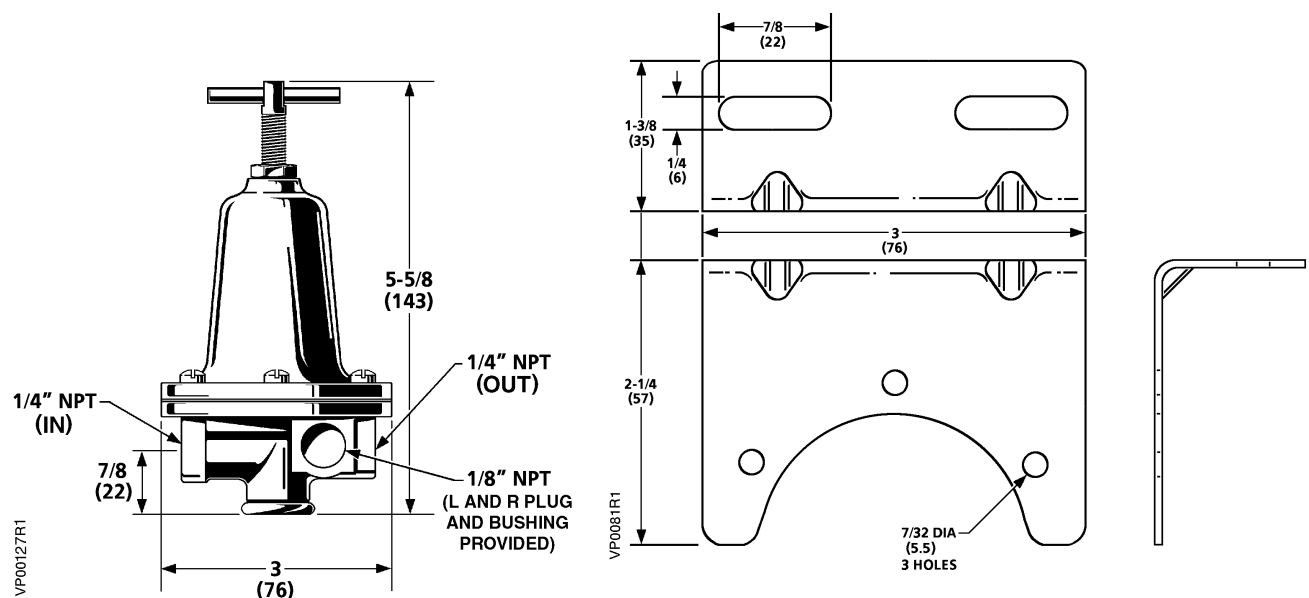


Figure 1. Pressure Reducing Valve and Mounting Bracket.

Adjustment

To increase pressure, turn adjusting screw clockwise.
 To decrease pressure, turn adjusting screw counterclockwise.

Service

NOTE: To obtain best efficiency and longest periods of trouble-free service, the air supply must be kept clean. Use a filter ahead of the PRV. *Clean* the filter periodically.

Replacement of Diaphragm

See Figure 2.

1. Release spring tension by turning adjusting screw (1) counter-clockwise.
2. Loosen the flange screws (5) and separate the upper (6) and lower housing (9).
3. Remove diaphragm assembly (7) and replace it with a new assembly.
4. Reassemble the upper and lower housing and tighten the flange screws.
5. Reset the PRV as instructed in the Adjustment section.

Replacement of Inner Valve

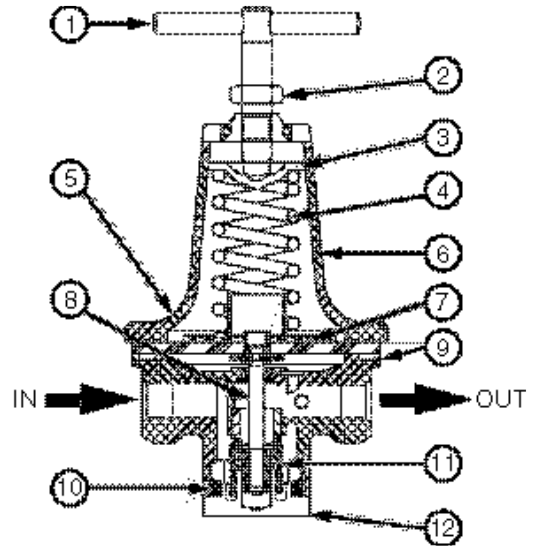
See Figure 2.

1. Remove bottom plug (12), poppet spring (11), and inner valve (8).
2. Wipe seat clean. Insert a new inner valve (8).
3. Reassemble the poppet spring (11) and bottom plug (12) with a new gasket (10).
4. Reset the PRV as instructed in the Adjustment section.

Repair Parts

For information on repair parts, contact:

Watts Fluid Air
 9 Cutts Road
 Kittery, ME 03904-0902
 Phone: (207) 439-9511
 Fax: (207) 439-5632



Item	Description
1	Adjusting screw
2	Check nut
3	Spring washer
4	Adjusting spring
5	Flange screw
6	Upper housing
7	Diaphragm assembly
8	Inner valve
9	Lower housing
10	Bottom plug gasket
11	Poppet spring
12	Bottom plug

Figure 2. Parts of the Pressure Reducing Valve.

Information in this publication is based on current specifications. The company reserves the right to make changes in specifications and models as design improvements are introduced. Product or company names mentioned herein may be the trademarks of their respective owners. © 2009-2023 Siemens Industry, Inc.